

topex[®]

**SYSTEM
SOLUTIONS
FOR ALL AREAS
OF INDUSTRY**

**top.
exactly.**

**automated
labelling**



7427807

The new 7000 series

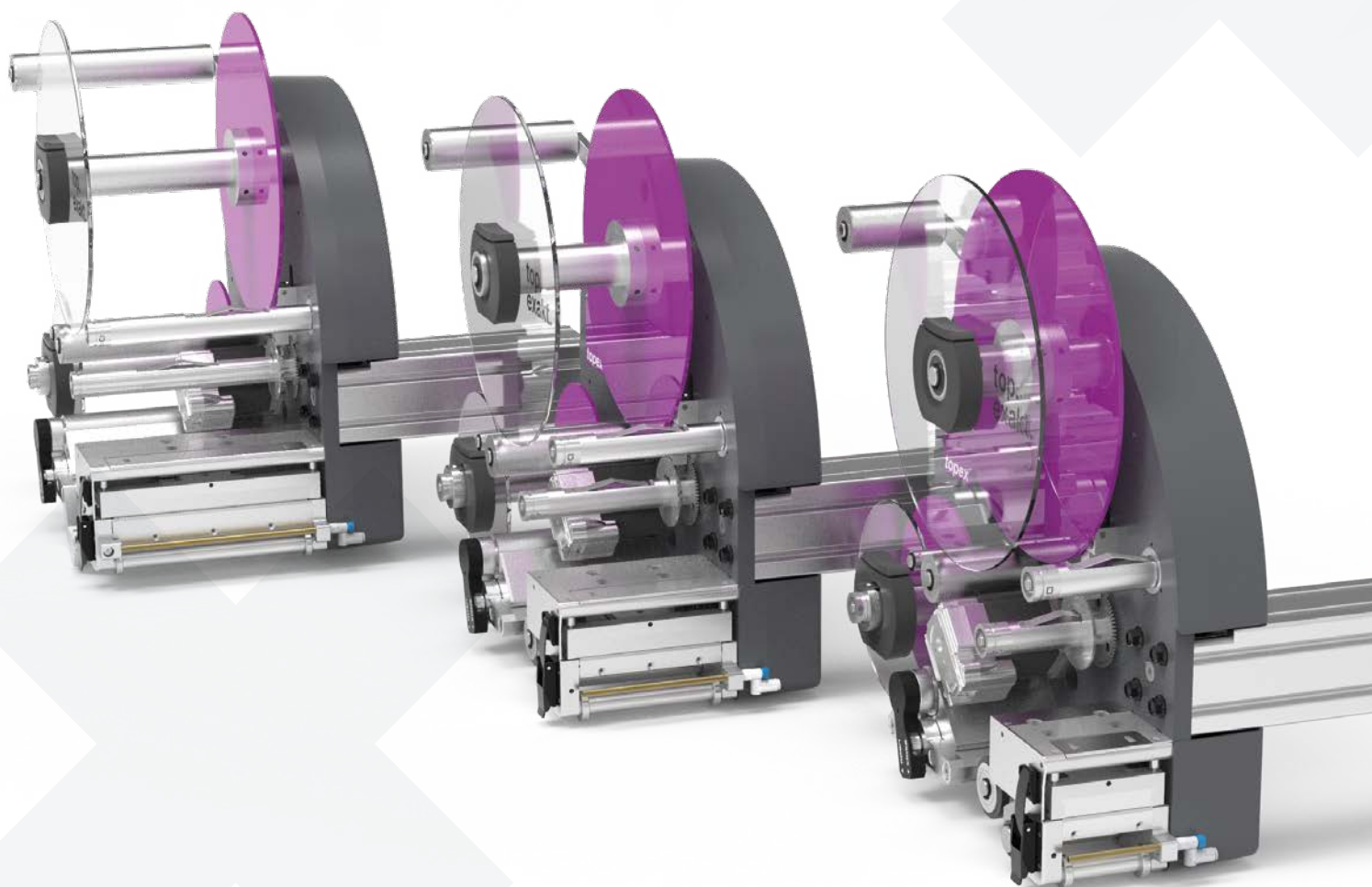
More functions,
more advantages
and a new design



For those who are looking for more than standard solutions.

The labelling of products or workpieces is an economical, reliable method of component marking, tried and tested thousands of times over.

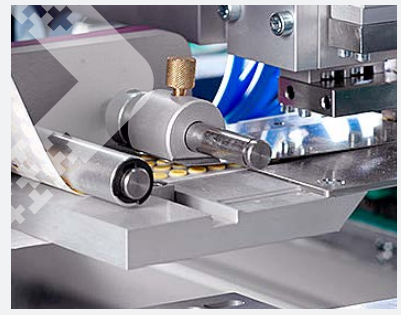
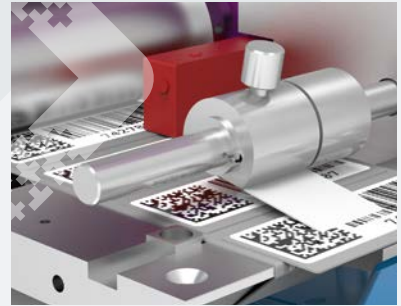
Our innovative thermo transfer labelling machines and systems represent the latest state of the art. With them, you are in safe hands.



Overview of the Advantages

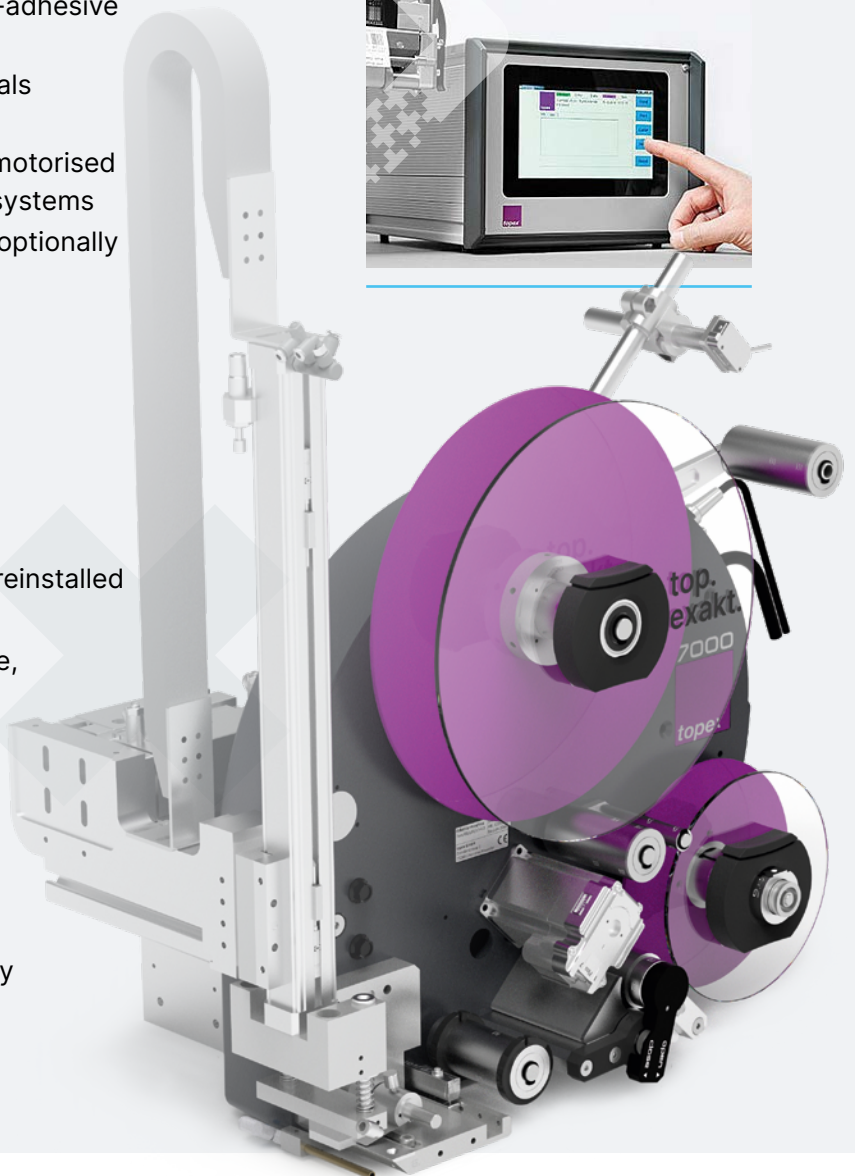
Mechanical

- + Very compact design
- + Can be integrated in any position
- + Can be configured in
 - printing widths: 54 mm, 108 mm, 163 mm
 - (topex thermo transfer printer)
 - dispensing width 160 mm
 - (topex label dispenser)
- + Right/left version for optimum operation and placement
- + Optimum tension and force distribution on the label conveyor through integrated dancer roll
- + Ideal for processing self-adhesive functional labels, e.g. PCE membranes or self-adhesive seals and foams
- + Processing of complex label materials through innovative drive concept
- + Integration possible in pneumatic, motorised or robot-supported label handling systems
- + High processing precision through optionally integrated label centring unit



Control

- + IPC with Win10 operating system preinstalled
- + Simple and intuitive operation
- + Can be integrated into any interface, e.g. ProfiNet, ProfiBus, TCP/IP, etc.
- + Connection to almost any industrial control system possible, e.g. Siemens S7, Beckhoff, etc.
- + Connection to company-specific networks possible, e.g. VW VASS Standard, Daimler, etc.
- + Optional: integrated I/O functionality to control label handling



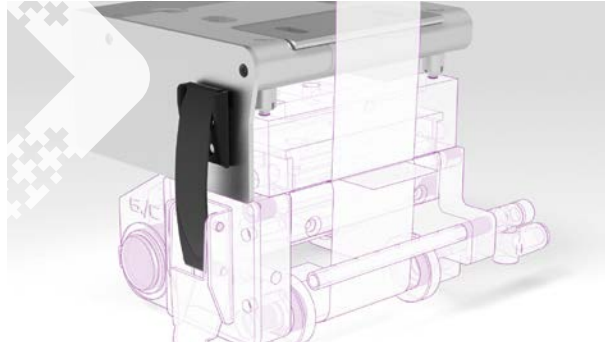
Overview of the new optimisations

01



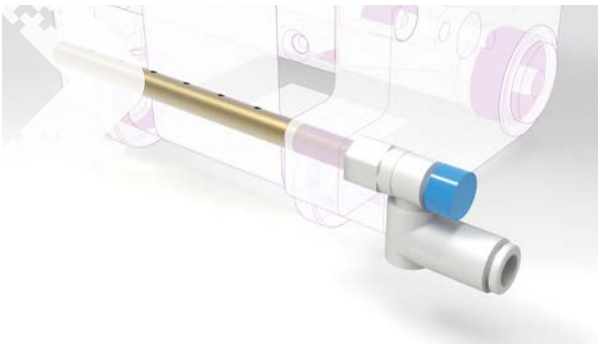
New guide rings
without screw connection; no tools required

02



New print head cover
with cleaning function

03



New restrictor
or auxiliary air

04



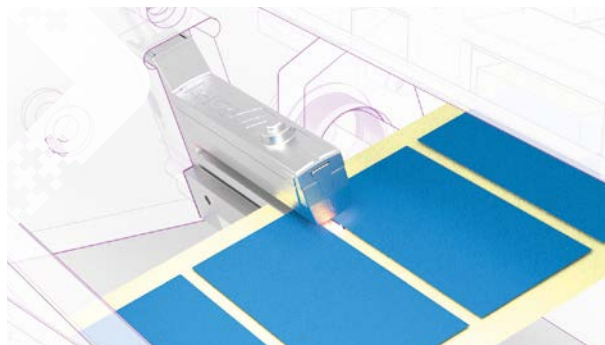
User-friendly
edge disc clamping

05



Drive unit
new locking mechanism with open/close
indicator

06



Fork light barrier
for precise and fast detection of the label edge

Labelling types



flat



over corner



curved



round



Labeling type flag

Functions



topex labelling printer (thermo transfer printer)

- + Printing widths: 54 mm, 108 mm, 163 mm
- + Resolution: 300 dpi
- + Right/left version
- + Can be integrated in any position



topex label dispenser

- + Dispensing width 160 mm (other dispensing widths available as options on request)
- + Right/left version
- + Can be integrated in any position



Standardhandling

- + Consisting of two pneumatic movements for the separation stroke and pressure stroke
- + Any pressure stroke up to 350 mm can be selected
- + The labelling stamp is designed for a flat labelling surface



flat



Extended standard

- + Handling systems with three or more movements
- + The labelling stamp is adapted to the respective product surface, e.g. for curved surfaces or for „across-corner“ labelling



curved



over corner



Labeling type flag

Options



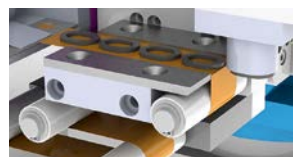
End of labelling early warning

- + Sensor for monitoring the label roll diameter
- + Enables short machine downtimes for changing the roll



Label centring unit

- + Pneumatic unit for exact alignment of the label on the labelling stamp
- + For precise label application, e.g. with PCE membranes
- + Centring jaws are non-stick coated



Retractable dispensing edge

- + For separation of complex labels and self-adhesive functional components
- + High precision when transferring the labels from the backing film
- + Well suited to self-adhesive seals or foams



Vacuum stamp – quick change unit

- + Tool-free setup possible
- + Integrated feedthrough
- + Exact locking via sliding bolts
- + Unambiguous assignment with RFID system

Your system supplier for
complex labelling solutions

automated labelling

Our product and service portfolio is geared towards customers who are looking for more than just standard solutions. With the aid of cutting-edge technology, we place our skills at your disposal. We offer sophisticated, well thought out system solutions for almost all industrial application areas.

topex GmbH
Daimlerstrasse 2
D-73268 Erkenbrechtsweiler
T +49 (0)70 26 / 93 16-0
F +49 (0)70 26 / 93 16-91
E zentrale@topex.de

www.topex.de

